

---

# Manual Book

---

1.	System power supply .....	4
2.	AV output interface.....	4
3.	Supported Interfaces .....	4
4.	Illustration of button layout on the remote control .....	5
5.	System Settings.....	6
5.1	Photo Setting.....	6
5.1.1	Display Interval.....	6
5.1.2	Transition Effect .....	7
5.1.3	Browse .....	7
5.1.4	Auto Play .....	8
5.2	Display Setup.....	8
5.2.1	TV Standard.....	8
5.2.2	Brightness .....	8
5.2.3	Contrast .....	9
5.2.4	TFT Brightness .....	9
5.2.5	TFT Contrast.....	9
5.2.6	TFT Saturation.....	10
5.3	Custom Setup.....	10
5.3.1	OSD Language.....	10
5.3.2	Encoding .....	10
5.3.3	Logo type .....	11
5.3.4	Repeat mode.....	11
5.3.5	Media .....	11
5.3.6	Default.....	12
5.4	Exit.....	12
6.	Photo .....	12
7.	Music.....	13
8.	Photo+Music .....	13
9.	Movie .....	13
10.	Calendar .....	14
10.1	Display .....	14
10.2	Set Date.....	15
10.3	Exit.....	15
11.	Clock.....	15
11.1	Display .....	15
11.2	Set Time .....	16
11.3	Exit.....	16
12.	Alarm .....	16
12.1	Enable .....	16
12.2	Set Time.....	17

---

12.3 Exit.....	17
13. Auto-Power.....	17
13.1 Power On Enable .....	17
13.2 Power off Enable.....	18
13.3 Set Time .....	18
13.4 Exit.....	18
13. Edit.....	18
14.1 Select Source.....	19
14.2 Copy.....	19
14.2 Delete .....	20
14.3 New Folder.....	20
14.4 Format Photo Frame .....	21
14. Favorite .....	21

---

## 1. System Power Supply

DC9-12V/1.5A

## 2. AV Output Interfaces

### 2.1 Video output

CVBS Output

### 2.2 Audio output

2Ch stereo output

## 3. Supported Interfaces

- SD: with dimensions of 24mm x 32mm x 2.1mm (about the size of a postage stamp) as shown in the illustration:



- MS: dimensions for the MS Card are 50mm x 21.5mm x 2.8mm, which is the exclusive memory card format for Sony's digital products, as shown in the illustration:



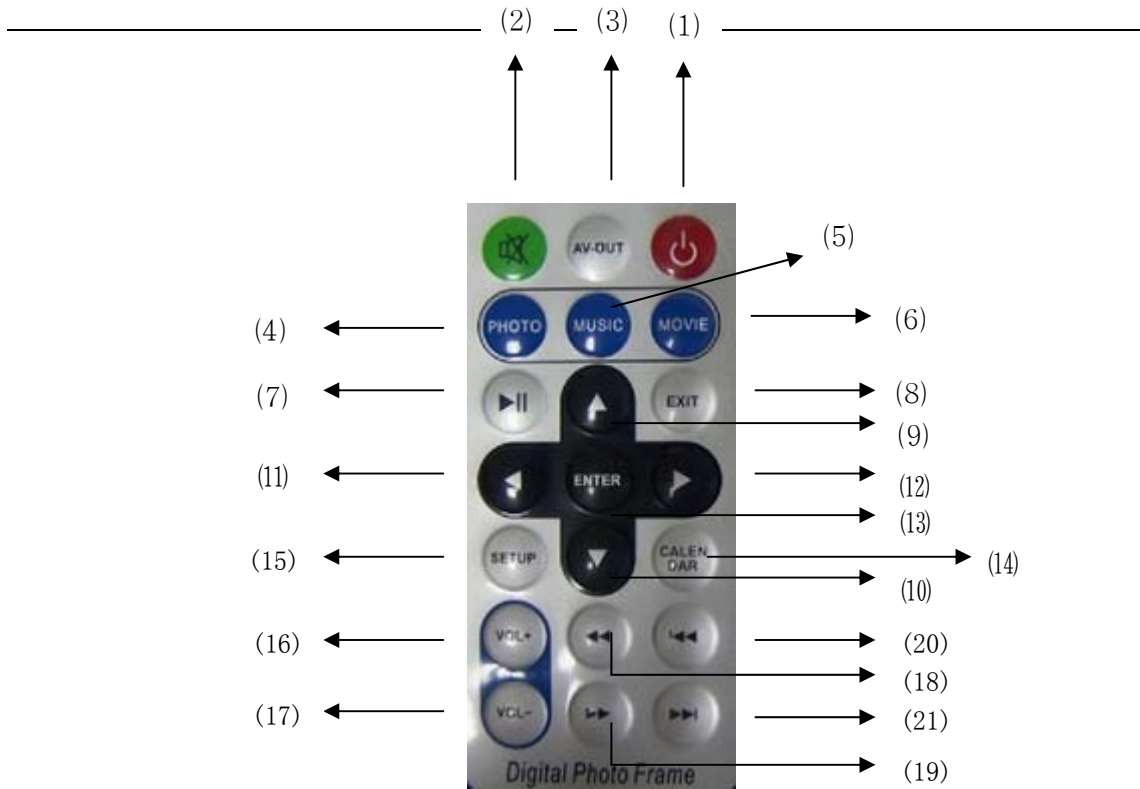
- xD: with dimensions of 20mm x 25mm x 1.7mm, which is the exclusive memory card for Fujifilm and Olympus digital products, as shown in the illustration:



- USB: supports 2.0



## 4. IR Key\_Map: Direction for use



(key\_map)

(1) KEY\_POWER

(2) KEY\_MUTE

(3) AVOUT SW

(4) KEY\_PHOTO: SHUT KEY to phto play

(5)KEY\_MUSIC: SHUT KEY to music play

(6)KEY\_MOVIE: SHUT KEY to play

(7) KEY\_PAUSE

(8) KEY\_EXIT:return to poweron menu whenever.

(9) KEY\_UP

(10) KEY\_DOWN

(11) KEY\_LEFT: Move left or rotate left 90 degree.

(12) KEY\_RIGHT: Move right or rotate right 90 degree.

- 
- (13) KEY\_ENTER: confirm key.
  - (14) KEY\_CALENDAR: Shut key to calendar.
  - (15) KEY\_SETUP: to enter setup mode.
  - (16) KEY\_VOL\_UP
  - (17) KEY\_VOL\_DOWN
  - (18) KEY\_SCB: Fast to play backward.
  - (19) KEY\_SCF: Fast to play forward.
  - (20) KEY\_PREV: play the prev photo/music/movie.
  - (21) KEY\_NEXT: play the next photo/music/movie.

## 5. System Settings

Select **Setup** from the main menu, press the **PLAY** button, and you will enter the settings mode. In addition, under other function modes, you can also enter the settings mode by pressing the **SETUP** button. The following illustration shows the initial screen in the settings mode, and in the following section we will introduce the various functions of the settings mode.



The adjustment screen for the SETUP menu is as follows:

### 5.1 Photo Setting

#### 5.1.1 Display Interval

This option can be used to set the length of time for display of each image. There are six options: 5 seconds, 10 seconds, 15 seconds, 30 seconds, one minute, or three minutes.



### 5.1.2 Transition Effect

This option is used to set the transition effect as images change.



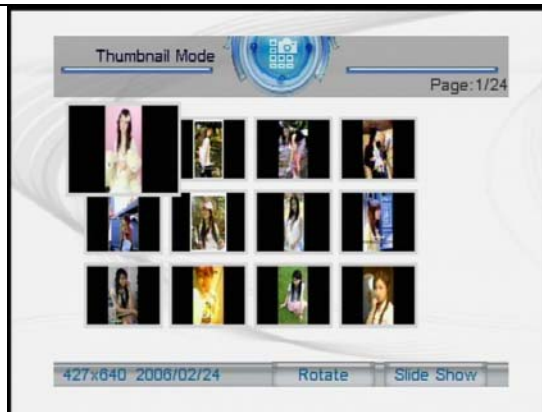
### 5.1.3 Browse

There are two kinds of “Photo” modes, one is the “File Manager” mode, and the other is the “Browser” mode.

#### File Manager mode:



#### Browser mode:



## 5.1.4 Auto Play

### 5.1.4.1 Photo

This setting can be set to either “on” or “off”. This setting decides whether or not to activate the automatic display function after entering the “Photo” mode. If this option is set to “on”, then the system will enter “slide show mode” after you enter “Photo”; if it is set to “off”, then the system will enter either File Manager mode or Browser mode, according to the Browse settings set by the user.

### 5.1.4.2 Music

This setting can be set to either “on” or “off”. This setting decides whether or not to activate the automatic play function after entering “Music” mode. If this setting is set to “on”, then the system will enter file mode and initiate automatic play after entering “Music”; if this setting is set to “off”, then, after entering “Music” file mode, the user will have to manually press the “Play” button.

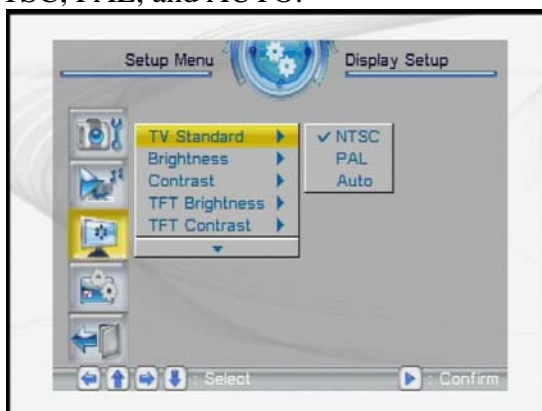
### 5.1.4.3 Movie

This setting can be set to either “on” or “off”. This setting decides whether or not to initiate the automatic play function after entering “Movie” mode. If this setting is set to “on”, the system will automatically play the video after entering “Movie”; if this setting is set to “off”, then after entering the “Movie” file mode, the user will be allowed to manually browse the videos.

## 5.2 Display Setup

### 5.2.1 TV Standard (Optional)

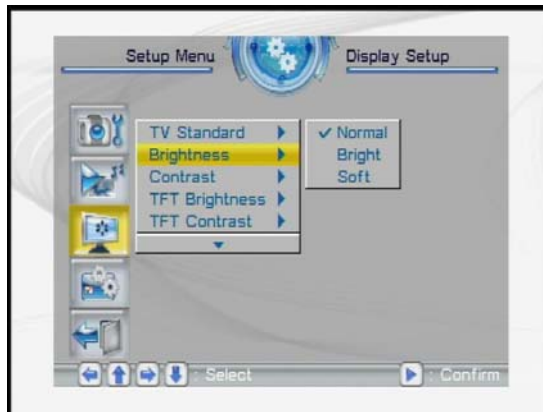
The user can select according to their standard television system. The options are: NTSC, PAL, and AUTO.



### 5.2.2 Brightness

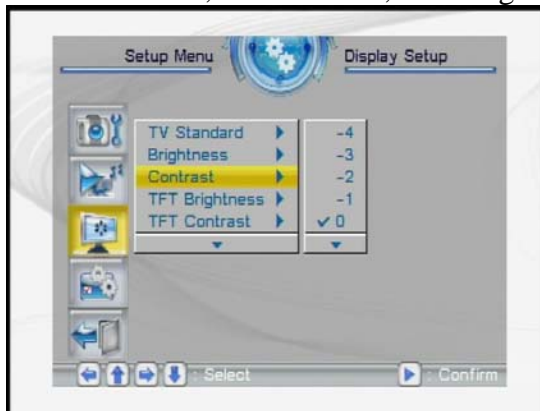


This option allows the user to set the brightness of the television screen. They can choose from three different options: normal, bright, and soft.



### 5.2.3 Contrast

This option can be used to set the screen contrast. The contrast is divided into 15 different levels, from -7~0~7, with larger numbers representing greater contrast.



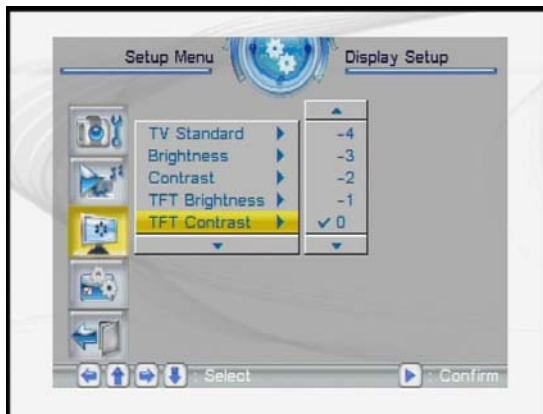
### 5.2.4 TFT Brightness

If an LCD display is used this option can be used to set the screen brightness. The brightness is divided into 15 levels, from -7~0~7, with the larger (positive) numbers representing greater brightness.



### 5.2.5 TFT Contrast

If an LCD display is used, this option can be used to set the screen contrast. The contrast is divided into 15 different levels, from -7~0~7, with larger numbers representing greater contrast.



### 5.2.6 TFT Saturation

If the user uses an LCD display, this option can be used to set the saturation of the display. The saturation is divided into 15 levels, from -7~0~7, with larger numbers representing a higher degree of saturation.



## 5.3 Custom Setup

### 5.3.1 OSD Language

This option can be used to set the language for the OSD (on screen display). The user can choose from: English, French, German, Italian, Spanish, Portuguese, Dutch, and Polish.



### 5.3.2 Encoding

This option sets the character encoding of the filenames. There are two types of encoding to choose from, Western European and Central European.



### 5.3.3 Logo type

This option allows the user to set the Logo. There are two available options: Default and Favorite.



### 5.3.4 Repeat mode

This option allows the user to set the play repeat mode. There are four available options: Off, One, Folder, and All.



Off: turns off the repeat mode.

One: repeats the file that is currently playing.

Folder: repeats the folder that is currently playing.

All: repeatedly plays all of the files inside the storage medium.

### 5.3.5 Media

This option allows the user to set the media which want to play.



### 5.3.6 Default

By setting this option, all settings will be reset to the original system settings.



### 5.4 Exit

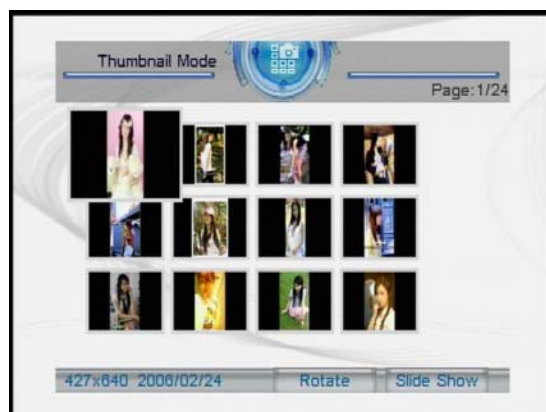
Leaves the setup menu, and goes back to the main menu.

## 6.Photo

After choosing **【Photo】** from the main menu, press the **PLAY** key, and the system will automatically detect whether or not a storage device has been connected (USB drive or memory card). If no storage device has been connected, the system will go back to the main menu.

After the storage device has been connected and correct read/write access has been confirmed, the system will enter the mode chosen by the user (please refer to the 「4.1.3 Browse」 section for settings details). If the user has selected **【File Mode】** for playlist management, the screen on the lower left will appear; if the user chooses **【Browse Mode】** for playlist management, the screen on the lower right will appear.

Under **【Photo】** mode, the system only supports the display of images in JPG format.



---

## 7. Music

After choosing **【Music】** from the main menu, press the **PLAY** key, and the system will automatically detect whether or not a storage device has been connected (USB drive or memory card). If no storage device has been connected, the system will go back to the main menu. After the storage device has been connected and correct read/write access has been confirmed, the system will enter **【Media Manager】** for playlist management, as shown in the illustration.

In the **【Music】** mode, the system only supports the playing of music files in MP2/MP3/WMA format. If the user has turned on the **【Music】** automatic playing function, then music will automatically be played when the system enters **【Music】** mode.

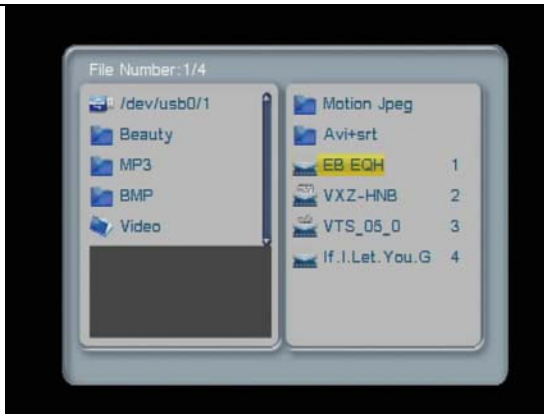


## 8. Photo+Music

After choosing **【Photo+Music】** from the main menu, press the **PLAY** key, and the system will automatically detect whether or not a storage device has been connected (USB drive or memory card). If no storage device has been connected, the system will go back to the main menu. After the storage device has been connected and correct read/write access has been confirmed, the system will enter **【File Manager】** for playlist management, as shown in the illustration. Under **【Photo+Music】** mode, the system supports the displaying of pictures and the playing of music, and the supported file types are: JPG, MP2, MP3, and WMA. If the user turns on the **【Photo+Music】** automatic playing function, then the system will initiate automatic display and playback after entering **【Photo+Music】** mode.

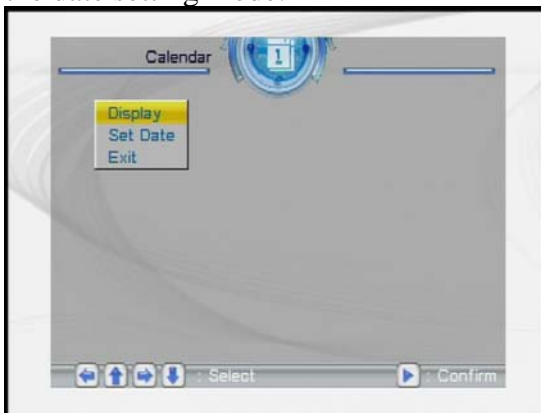
## 9. Movie

After choosing **【Movie】** from the main menu, press the **PLAY** key, and the system will automatically detect whether or not a storage device has been connected (USB drive or memory card). If no storage device has been connected, the system will go back to the main menu. After the storage device has been connected and correct read/write access has been confirmed, the system will enter **【File Manager】** for playlist management, as shown in the illustration. Under **【Movie】** mode, the system supports movie playback in the following formats: DAT, MPG, VOB, and AVI.



## 10.Calendar





After selecting **【Calendar】** from the main menu, press the **PLAY** button, and you will enter the date setting mode.



### 10.1 Display

This option provides the **【Calendar】** display function. The date displayed in the calendar is the current date set in the system.

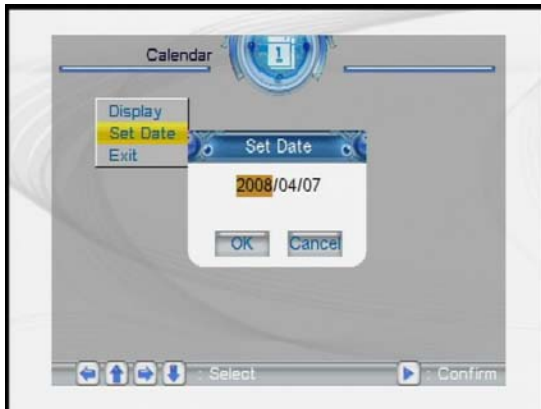


In addition to displaying the current date, the user can use the   keys to browse different months, or use the   keys to browse different years.



## 10.2 Set Date

~~This function allows users to set the system date.~~



## 10.3 Exit

~~Exits date settings and goes back to the main menu.~~

# 11.Clock

After selecting **【Clock】** from the main menu, press the **PLAY** key, and the system will enter time setting mode.



## 11.1 Display

This option allows the user to choose if they want to display **【Time】** or **【Time & Calendar】** or **【Analog Clock】**(optional). Select **【Time】**, and press the **PLAY** key.





Select **【Time & Calendar】** , and press the PLAY key.



## 11.2 Set Time

This function allows the user to set the system time.



## 11.3 Exit

Exits the time settings, and goes back to the main menu.

## 12.Alarm

After selecting **【Alarm】** from the main menu, press the **PLAY** button, and the system will enter the alarm settings mode.

### 12.1 Enable

This function allows users to activate (On) or de-activate (Off) the alarm.





## 12.2 Set Time

This function allows users to set the alarm time. When the alarm function has been activated, a prompt will appear. Press any key to exit the alarm mode.



## 12.3 Exit

Exits the alarm settings, and goes back to the main menu.

## ~~13. Auto Power~~

~~After selecting **【Auto Power】** from the main menu, press the **PLAY** button, and the system will enter the automatic power on/power off settings mode.~~

### ~~13.1 Power On Enable~~

~~This option allows the user to either activate (On) or de-activate (Off) the automatic power on function.~~



### ~~13.2 Power off Enable~~

~~This function allows the user to activate (On) or de-activate (Off) the automatic power-off function.~~



### ~~13.3 Set Time~~

~~This function allows users to set the automatic power-on/power-off times. The user can choose to set the **【Power on】** time or the **【Power off】** time.~~






### ~~13.4 Exit~~

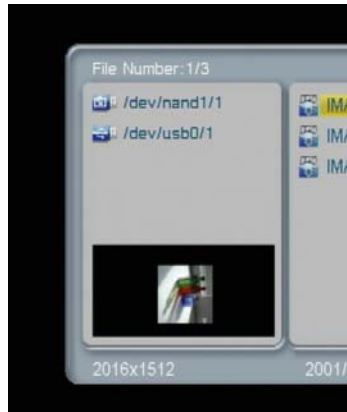
~~Exits the automatic power-on/power-off settings, and goes back to the main menu.~~

## ~~14.Edit~~







~~After selecting **【Edit】** from the main menu, press the **PLAY** button, and the system will enter Edit mode. In Edit mode, the user can choose Copy Photo → Music → Photo/Music → Movie or all type.~~

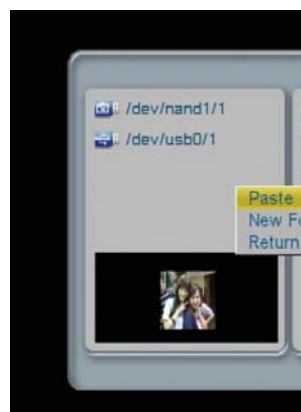
## 14.1 Select Source

The user can use the   keys to select source and press the  button to browse the files.





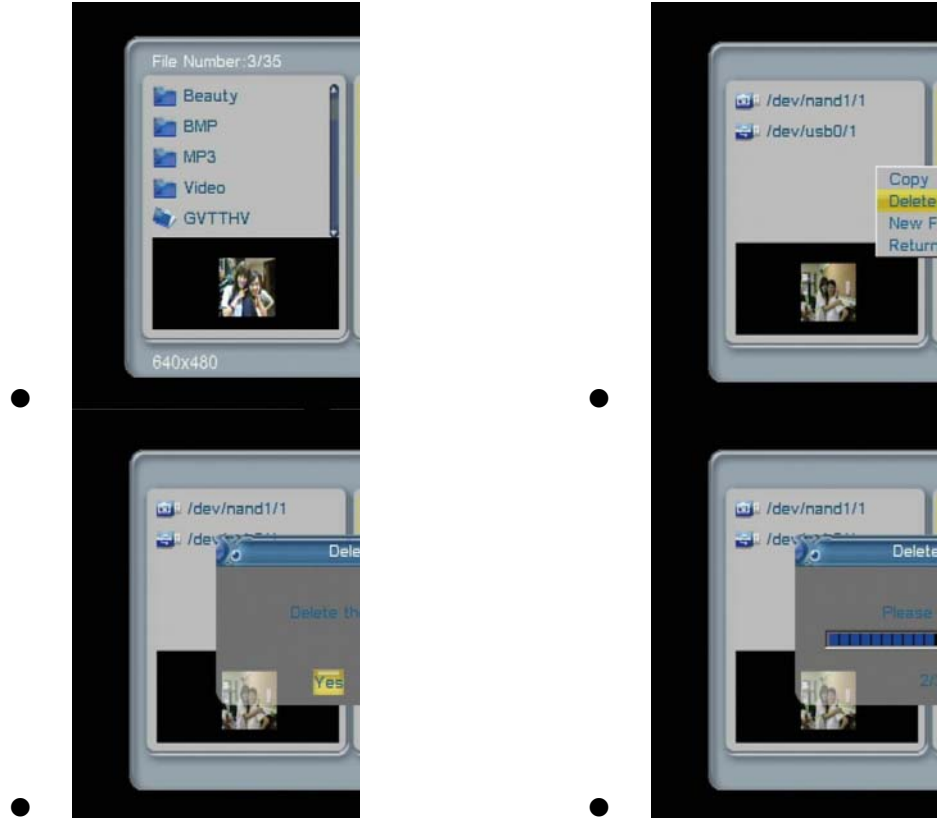
## 14.2 Copy

The user can Copy image files from the storage device, and use the images as screen saver images. The user can use the   keys to select images. After choosing images, press the  button, and the selected images will display a red frame which indicates that they have been selected. If the user wishes to cancel a selection, they can accomplish this by pressing the  button again. After the user completes the selection, they can press the   keys to go to the **【Edit】** option, and then press **【Copy】** to save the selected images. The maximum number of images this function can save is 15 (including the default screen saver images).



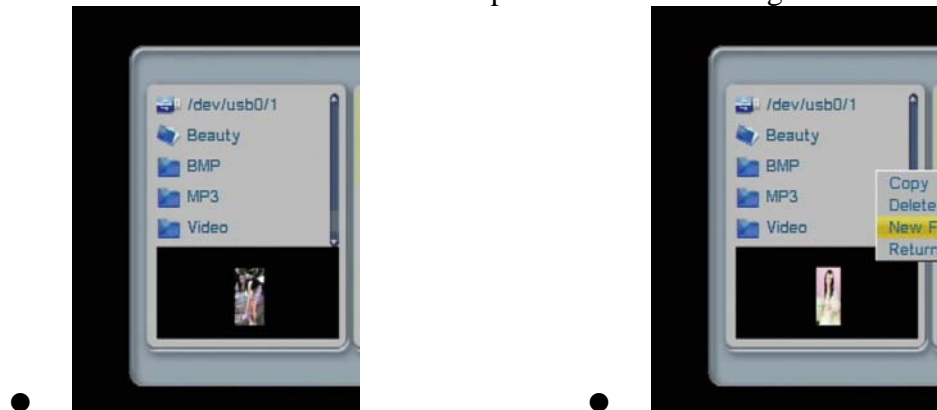
## 14.2 Delete

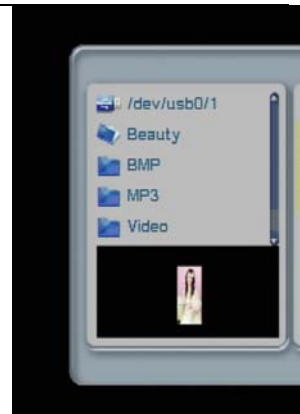
~~This function allows users to delete screen saver images. The user first can use the   keys to select images which wish to delete and go to the **【Edit】** option, and then after entering the delete mode by pressing the **PLAY** key, you can see a dialogue; Press yes and the selected image will be deleted.~~



## 14.3 New Folder

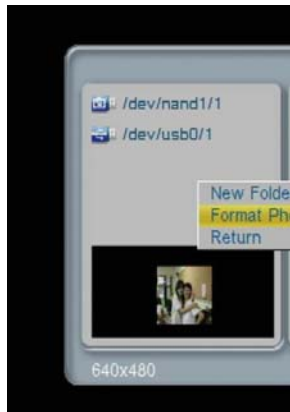
~~This function allows users to create a folder to deposit the selected images~~





### ~~14.4 Format Photo Frame~~

~~This function allows users to format Nand.~~



## 15. Favorite

After selecting **Favorite** , press the **PLAY** button, and you will enter **Slide Show** mode, and be able to preview the screen saver images.

## 16. Problems & Solution

	<b>Familiar reason and solution</b>
the LCD digital media can not be switched on	The power adapter isn't plugged in correctly, please plug in the power adapter, and make sure the connection of the power adapter is all right.

<p>the screen can not be started up</p>	<p>The card isn't plugged in correctly.</p> <p>There aren't files of picture, music and video</p> <p>The format of files are different.</p> <p>Examine the method of your plug-in is right or wrong.</p> <p>Don't plug in the card carelessly.</p> <p>Make sure there are at least one picture, music or video file in the memory card.</p> <p>Compatible format of picture: JPEG</p> <p>Compatible format of music: MP3</p> <p>Compatible format of video: DAT/MPG/VOB/AVI</p>
<p>The screen can not show picture when you choose "PHOTO" function</p>	<p>Not-support file format.</p> <p>There isn't any picture in storage card.</p> <p>Make sure there is at least one picture in storage card.</p> <p>Compatible format of picture: JPEG</p> <p>Notice: the digital frame only compatible with JPEG format, not support other format like TIFF、BMP、GIF.</p>
<p>There is no video of television output or the video is abnormal (optional)</p>	<p>Make sure the connection of "AV OUT" video output line and television is correct.</p> <p>Make sure the local output modes (AV/TV) are the same.</p> <p>Make sure the local output system is identical with your TV.</p> <p>If the above are all correct, please get in touch with the appointed maintenance point or the appointed custom service department.</p>
<p>The small video size on the screen</p>	<p>Resolution of picture is low itself.</p> <p>The pictures of most digital cameras are 320×240 or more lower than it, the best video picture scenario is 640×480</p>
<p>Dark block around the picture</p>	<p>It's normal, because different digital camera use different scenario or pixel to shot pictures.</p>

Remote controller can not work	Make sure the transparent sticker has been plugged out Make sure you operate it within available distance between you and the LCD media Please check the LI-Battery of the remote controller
-----------------------------------	---